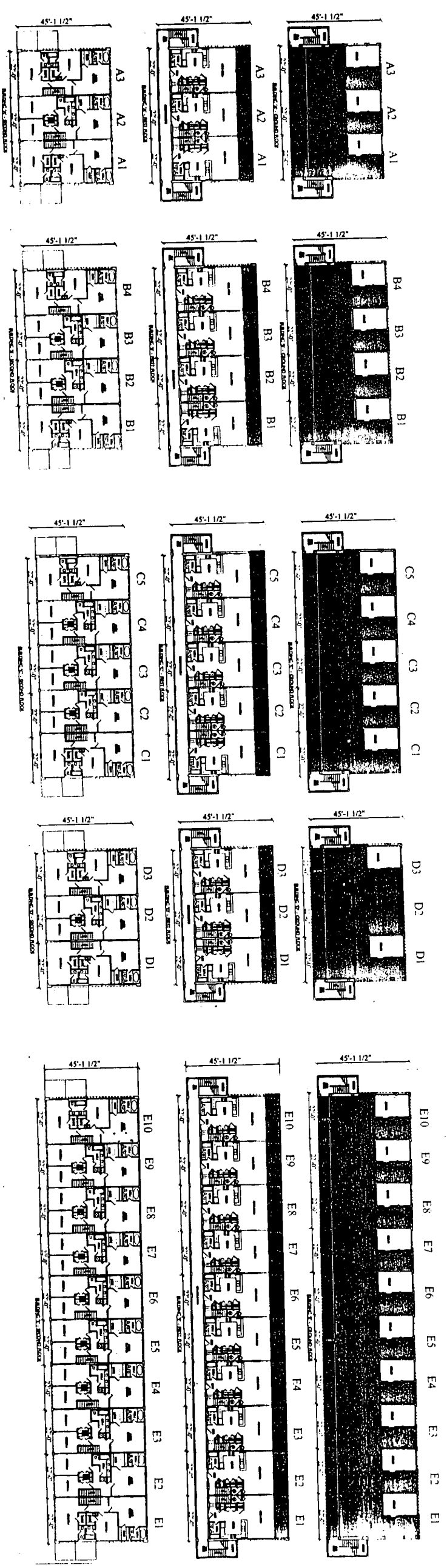


A BOUNDARY SURVEY OF
WALKER KEY CONDOMINIUMS - PHASE 1
 LYING IN A PORTION OF SECTION 12,
 TOWNSHIP 9 SOUTH, RANGE 5 EAST,
 BALDWIN COUNTY, ALABAMA



WASHER, HILL
 & LIPSCOMB
 SURVEYORS

APR 28 1992

CHARTERED 1820
 REGISTERED PROFESSIONAL SURVEYORS
 BALDWIN COUNTY, ALABAMA