

STATE OF ALABAMA }  
COUNTY OF BALDWIN }

RECORD FEE 15.00  
STATE OF ALABAMA  
BALDWIN COUNTY  
I CERTIFY THIS INSTRUMENT IS  
FILED AND TAXES COLLECTED

APR 6 12 42 PM '98

RECORDED  
MISC 98/272  
JUDGE OF PROBATE

**INCREMENTAL CERTIFICATE OF AMENDMENT**

**OF**

**DECLARATION OF CONDOMINIUM**

**OF**

**HARBOUR PLACE, A CONDOMINIUM**

WHEREAS, COAST DEVELOPMENT COMPANY, L.L.C., An Alabama Limited Liability Company, as developer, did for itself, its successors, grantees and assigns, did by that certain Declaration of Condominium recorded in Miscellaneous Book 90, Pages 548, et seq., of the records in the Office of the Judge of Probate of Baldwin County, Alabama, submit the real property described in said Declaration and exhibits therein to the condominium form of ownership and use in the manner provided by the Alabama Uniform Condominium Act, Sections 35-8A-101, et seq., Code of Alabama (1975), as amended, which said condominium was in said Declaration identified as Harbour Place, A Condominium, all recordings cited herein refer to those in the Office of the Judge of Probate of Baldwin County, Alabama; and,

WHEREAS, Coast Development Company, L.L.C., as Developer of said condominium desires to bring additional areas located within the project into the Condominium as common elements; and,

WHEREAS, Coast Development Company, L.L.C., hereinafter referred to as "Developer," reserved unto itself certain real property referred to as cross-hatched (marked) areas labeled Phase III in Exhibit B to said Declaration of Condominium of Harbour Place Condominium, A Condominium, as recorded in Miscellaneous Book 90, Pages 548, et seq., and Developer now desires to add and include the said real property, more particularly described in EXHIBIT A attached hereto and made a part hereof, by incorporating said land and improvements into said Condominium known as Harbour Place, A Condominium, the same as if said land and improvements had been originally included therein, and by submitting said real property and improvement to the condominium form of ownership and use by filing this Incremental Certificate of Amendment as in said Declaration, as amended.

NOW, THEREFORE, the Developer, hereby makes the following additional Incremental Amendment to the said Declaration regarding the real property and improvements described therein, and hereby specifies said Declaration of Condominium, as amended as contained herein shall constitute covenants to run with all the lands described in the aforesaid Declaration, as amended, and shall be binding upon Coast Development Company, L.L.C., its successors and assigns, and all subsequent owners of all and any part of said condominium real property and improvements, together with their grantees, successors, heirs, executors, administrators, devisees or assigns, to-wit:

1. Increment. As provided in the Declaration of Condominium of Harbour Place Condominium, A Condominium, as amended, the Developer

MISC 0098 PAGE 0272

hereby incorporates the land set out in EXHIBIT A attached hereto into the condominium therein and herein identified as Harbour Place Condominium, A Condominium.

2. Purpose. The purpose of this Incremental Certificate of Amendment is to submit said additional lands, together with all improvements located thereon, to the lands described in the aforesaid Declaration, as amended, and Exhibits thereto, to the condominium form of ownership and use in the manner provided by the aforesaid Declaration, as amended.

3. The Land. The lands owned by the Developer which are herewith submitted to the Condominium form of ownership are those certain lands situated, lying and being in the County of Baldwin, State of Alabama, more particularly described in EXHIBIT A attached hereto and is made a part hereof as if fully set out herein.

4. Adoption. As herein altered and amended, the aforesaid Declaration of Condominium of Harbour Place Condominium, A Condominium, and every part and provision thereof, is in all respects ratified and confirmed, and by reference adopted and incorporated herein, the same as if fully and at large set forth herein.

IN WITNESS WHEREOF, the said Coast Development Company, L.L.C., An Alabama Limited Liability Company, has caused this Amendment to be executed by and through its duly authorized Member and Manager on this the 10<sup>th</sup> day of March, 1998.

MS00098 PAGE 0273

**ATTEST:**

**COAST DEVELOPMENT COMPANY, L.L.C.**  
An Alabama Limited Liability Co.

By: \_\_\_\_\_  
Its \_\_\_\_\_

By: C.B. Harbour, III (Seal)  
**C.B. HARBOUR, III**  
Its Member and Manager

IN WITNESS WHEREOF, Harbour Place Condominium Owners Association, Inc. does hereby accept, approve and ratify said incremental amendment on this the 12<sup>th</sup> day of MARCH, 1998.

**ATTEST:**

**HARBOUR PLACE CONDOMINIUM OWNERS ASSOCIATION, INC.**

By: Tracy M. [Signature]  
Its Secretary

By: Patrick H. McCormick (SEAL)  
**PATRICK H. MCCORMICK**  
Its President

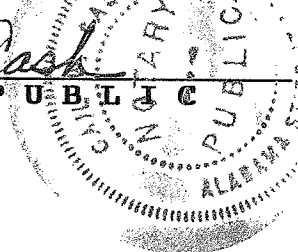
STATE OF ALABAMA }  
COUNTY OF BALDWIN }

I, the undersigned, a Notary Public in and for said County and said State, do hereby certify that C.B. HARBOUR, III, whose name as Member and Manager of COAST DEVELOPMENT COMPANY, L.L.C., An Alabama Limited Liability Company, is signed as Developer to the foregoing Certificate and who is known to me, acknowledged before me on this day, that, after being informed of the contents of said conveyance, he as such Manager and Member executed the same voluntarily for and as the act of said company on the day the same bears date.

Given under my hand and official seal on this 10<sup>th</sup> day of March, 1998.

My Commission Expires:

Dec. 2, 2001

Gail W. Cash  
NOTARY PUBLIC  


MISC0098 PAGE 0274

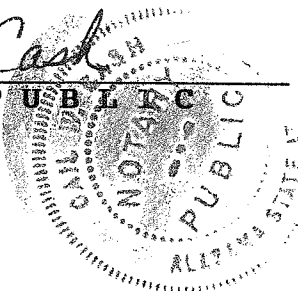
STATE OF ALABAMA }  
COUNTY OF BALDWIN }

I, the undersigned, a Notary Public in and for said County and said State, do hereby certify that PATRICK H. MCCORMICK, whose name as President of HARBOUR PLACE CONDOMINIUM OWNERS ASSOCIATION, INC., An Alabama Non-Profit Corporation, is signed to the foregoing Certificate and who is known to me, acknowledged before me on this day, that, after being informed of the contents of said conveyance, he as such officer executed the same voluntarily for and as the act of said corporation on the day the same bears date.

Given under my hand and official seal on this 12<sup>th</sup> day of March, 1998.

My Commission Expires:

Dec. 2, 2001

Gail W. Cash  
NOTARY PUBLIC  


This Instrument Prepared By:  
Timothy D. Garner  
Attorney at Law  
Post Office Box 3304  
Gulf Shores, Alabama 36547-3304  
(334) 968-5540

**INCREMENTAL AMENDMENT TO DECLARATION OF CONDOMINIUM**

**OF HARBOUR PLACE, A CONDOMINIUM**

**EXHIBIT A**

**AREA 2:** An area of 10.3 feet by 14.8 feet, situated East of an existing elevator shaft in the Northeast corner on ground (garage) level of Harbour Place Condominium which area appears as a cross hatched (marked) area labeled as "PHASE III" on EXHIBIT B of the Offering Statement and the recorded Declaration of Condominium recorded in Miscellaneous Book 90, Page 548 in the Office of the Judge of Probate of Baldwin County, Alabama, more particularly described as follows, to-wit: Commence at the Northwest corner of Lot 1 of Harbour Place Subdivision as same is described on Slide 1607-A and re-recorded on Slide No. 1616-B in the Office of the Judge of Probate of Baldwin County, Alabama; thence South 21° 20' East Along the Western boundary of said Lot 1 a distance of 26.5 feet; thence South 00° 00' East continuing along said Western boundary a distance of 231.2 feet; thence South 58° 01' East a distance of 70.3 feet to the exterior Northeastern corner of said condominium; thence South 44° 55' West a distance of 0.9 feet to the approximate location of the inside Northeastern corner of said condominium and being the Point Of Beginning of the realty herein described and conveyed; thence South 00° 05' East along the Western face of the Eastern wall of said condominium a distance of 10.3 feet, more or less, to its intersection with the Northern face of an interior wall; thence South 89° 55' West along said Northern face a distance of 14.8 feet, more or less, to its intersection with the Eastern face of the Eastern wall of an existing elevator shaft; thence North 00° 05' West along said Eastern face a distance of 10.3 feet, more or less, to its point of intersection with the Southern face of the Northern most wall of said condominium; thence North 89° 55' East along said Southern face a distance of 14.8 feet, more or less, to the said Point of Beginning and containing in the aggregate approximately 152 square feet, more or less.

MISC0098 PAGE 0275

**INCREMENTAL AMENDMENT TO DECLARATION OF CONDOMINIUM**

**OF HARBOUR PLACE, A CONDOMINIUM**

**EXHIBIT A CONTINUED**

**AREA 3:** An area of 10.3 feet by 8.0 feet, situated west of an existing stairwell in the Northwest corner on ground (garage) level of Harbour Place Condominium which area appears as a cross hatched (marked) area labeled as "PHASE III" on EXHIBIT B of the Offering Statement and the recorded Declaration of Condominium recorded in Miscellaneous Book 90, Page 548 in the Office of the Judge of Probate of Baldwin County, Alabama, more particularly described as follows, to-wit: Commence at the Northwest corner of Lot 1 of Harbour Place Subdivision as same is described on Slide 1607-A and re-recorded on Slide No. 1616-B in the Office of the Judge of Probate of Baldwin County, Alabama; thence South 21° 20' East Along the Western boundary of said Lot 1 a distance of 26.5 feet; thence South 00° 00' East continuing along said Western boundary a distance of 231.2 feet; thence South 05° 34' East a distance of 37.4 feet to the exterior Northwestern corner of said condominium; thence South 45° 05' East a distance of 0.9 feet to the approximate location of the inside Northeastern corner of said condominium and being the Point Of Beginning of the realty herein described and conveyed; thence North 89° 55' East along the Southern face of the Northern wall of said condominium a distance of 8.0 feet, more or less, to its intersection with the Western face of an interior wall; thence South 00° 05' East along said Western face a distance of 10.3 feet, more or less, to its point of intersection with the Northern face of an interior wall of said condominium; thence South 89° 55' West along said Northern face a distance of 8.0 feet, more or less, to its intersection with the Eastern face of the Western wall of said condominium; thence North 00° 05' West along said Eastern face a distance of 10.3 feet, more or less, to the said Point of Beginning and containing in the aggregate approximately 82 square feet, more or less.

Said Area 2 and Area 3, are all described and conveyed pursuant to platted survey dated February 26, 1998, by Construction Engineers' Consultant, L.L.C., and signed by H. Mitchell Wright, PLS, Ala. Reg. No. 15924, a copy of which is attached hereto as EXHIBIT B.

NOTE: Area 1 has been deeded to Harbour Place Condominium Owners Association, Inc. by the developer, and said Area i is not included as common element property.

MISC0098 PAGE 0276

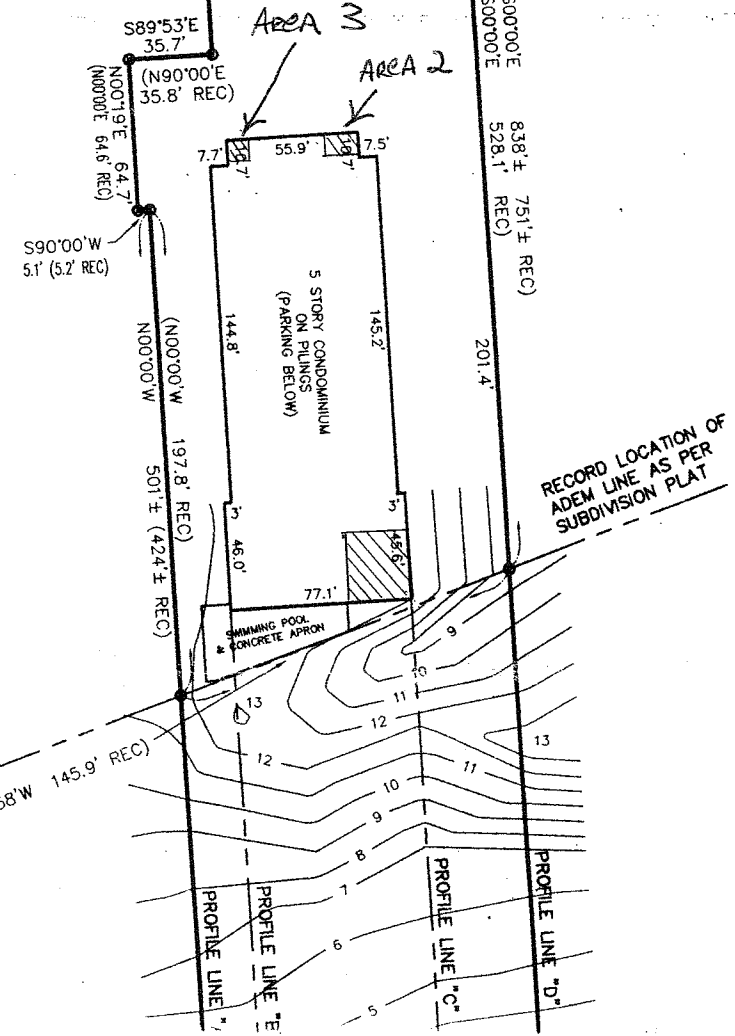
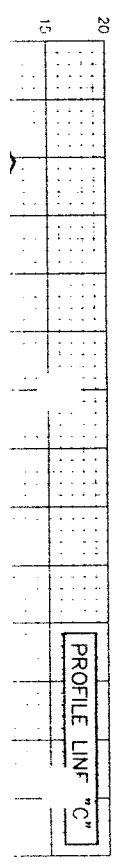
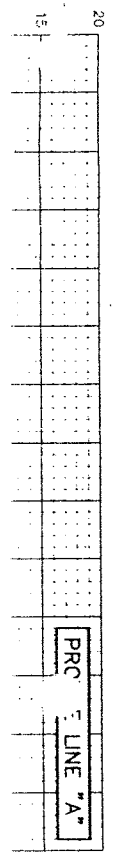
EXHIBIT B

# PERDIDO BEACH BOULEVARD 120' REC R/W (A.K.A. ALABAMA HIGHWAY 182)

TBM: TOP OF RBF  
ELEV: 10.1' (MSL)

(CHORD=N70°39'47"E 127.25' RECORD)  
(RADIUS=5669.58' RECORD)  
(LENGTH=127.25' RECORD)  
CHORD=127.1'

**LOT 1**  
HARBOUR PLACE  
SUBDIVISION  
(SLIDE 1616B)  
(SLIDE 1607A)



(S72°58'W 145.9' REC)

PROFILE LINE "A"  
PROFILE LINE "C"  
PROFILE LINE "E"  
PROFILE LINE "C"  
PROFILE LINE "D"

RECORD LOCATION OF  
ADEM LINE AS PER  
SUBDIVISION PLAT

1 of 1